

 ePole®

The Future of Small Cell Infrastructure

Business Continuity Applications

About Enersphere

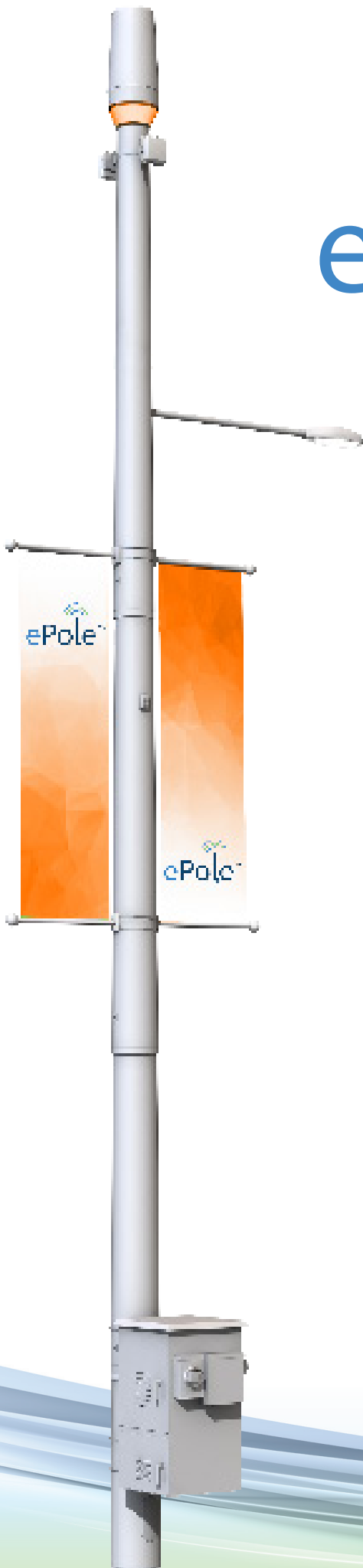
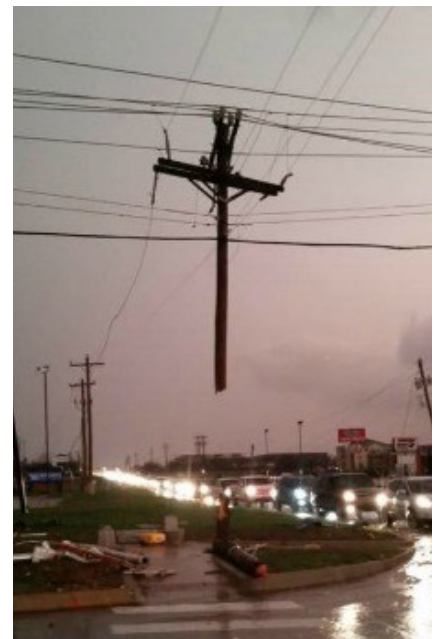
Enersphere Communications (“Enersphere”) was founded in 2011 and is located in Atlanta, GA. Enersphere develops, sells and finances mobile communications and electric utility infrastructure, including an integrated outdoor cell site utilizing modular composite pole technology. Our solution, the ePole, efficiently and economically expands mobile capacity and coverage, strengthens electric distribution networks and enables public safety applications to create a safer, more eco-friendly world.

What is an ePole?

The ePole is a multi-purpose, safe and aesthetically pleasing cell site that provides a seamless option for wireless service providers to transition economically from towers to small cell infrastructure. With patents pending, the ePole includes an integrated pole-top antenna with LED luminary, pole-mounted radio and battery enclosure, antenna cables, power and grounding systems, plus a modular, composite pole. In addition, the optional WiFi capability prepares service providers with data offloading capacity in highly congested areas of the network to ensure the quality of data service. ePoles are available in 35' (10.6m), 45' (13.8m), 50' (15.2m) and 70' (21.3m) total lengths. Mobile radios, batteries and other equipment selected by the service provider can be pre-installed and tested in the enclosure before shipment to the installation site. The antenna cables, power and ground wires that traverse from the antenna to the radios, and equipment located in the pole-mounted cabinet are safely concealed inside the composite pole to improve safety and preserve the aesthetic value in the community.

How do you benefit from an ePole?

Is your cities' infrastructure prepared for the next hurricane, tornado, blizzard or any natural disaster? The ePole offers a solution that can withstand wind gusts greater than 150 mph (241 kph) for extended periods of time and ice accumulation of more than 0.75" (1.9 cm) on the pole. The ePole is made out of a fire-retardant, non-conductive composite solution that bends when struck by force versus snapping in half. Not only does this provide a safer structure for the public, but also it provides a more economical solution for municipalities and utilities. The ePole is assembled in four nested sections that allow for an expedited replacement of damaged sections due to a tree falling or a car accident.





The ePole

Multi-purpose mobile communications infrastructure providing solutions for multiple parties:

- Mobile network operators
- Electric utilities
- Municipalities
- Resorts and hotels
- Commercial real estate

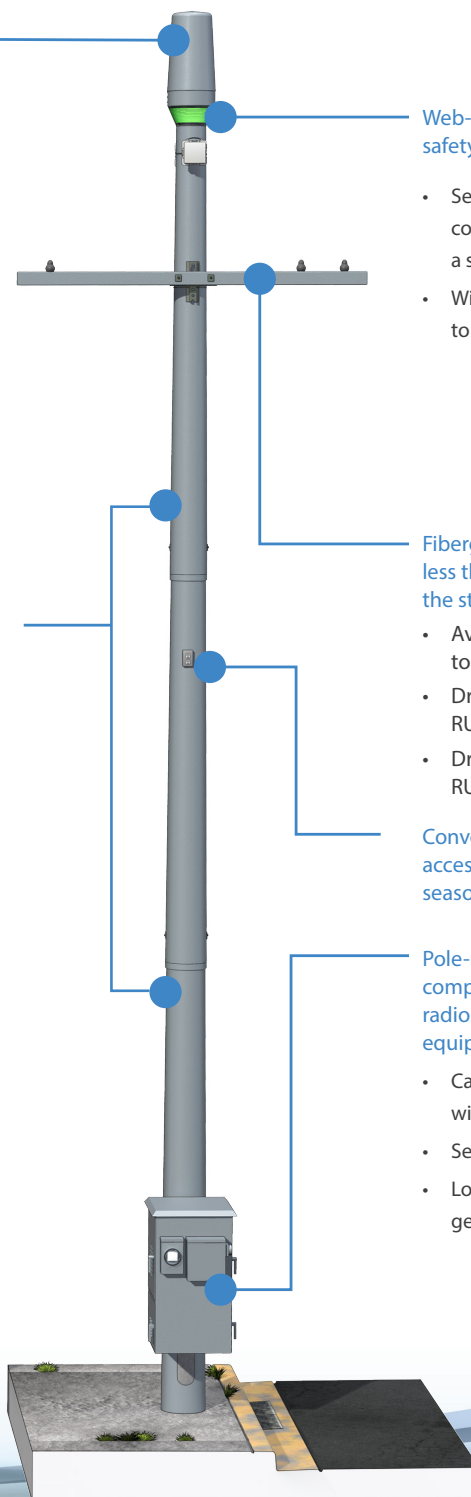
Integrated antenna assembly with multi-band, tri-sector or omni antenna. Assembly contains controllable LED luminary with full spectrum of changing colors and intensity, ideal for public safety or municipal applications.

- Antenna frequencies from 698 to 2700 MHz

Lightweight and modular design for easy transport, assembly and installation; non-conductive, fire-resistant pole has a smooth finish for community-friendly aesthetics.

- Available in 45' (13.7m), 50' (15.2m) and 70' (21.3m)
- Available in multiple colors
 - Standard – gray or brown
- Meets EIA/TIA-222-Rev G for wind loading
 - 150-mph (241 kph), 3-second gust
 - 60-mph (97 kph), 3-second gust with .75" (1.9 cm) ice
- Meets ANSI standards for utility poles
- 20-year warranty (structure, workmanship and color)

For more information, please contact:
 Enersphere Communications, LLC
info@enersphere.com
www.enersphere.com



Web-controlled LED lighting for public safety and municipal events

- Send real time weather alerts to the community by setting the LED lighting to a standard emergency color
- WiFi and video surveillance to improve operations

Fiberglass cross arms weigh significantly less than wood beams with up to six times the strength.

- Available in lengths from 5' (1.5m) to 12' (3.6m)
- Drilling pattern 8' (2.4m) arms RUS 03, 04
- Drilling pattern 10' (3.1m) arms RUS 05

Convenience power outlet provides accessible power for operations and seasonal decorative attachments.

Pole-mounted enclosure is NESC compliant and designed to host multiple radio configurations from the leading equipment providers.

- Cabinet location on pole is compliant with 2012 edition of NESC standards
- Service entry meter box
- Load center with distribution and generator plug